



Worldwide Innovative Networking in
personalized **cancer** medicine

WIN2014 Symposium

Message from the Chair
Dr. John Mendelsohn

Paris, France

WIN2014 is endorsed by:



* This program has the American Society of Clinical Oncology's approval for quality of educational content. ASCO endorsement does not constitute medical advice. Health care providers should exercise their own independent medical judgment. ASCO® is a registered trademark of the American Society of Clinical Oncology®. Used with permission. This is not an ASCO sponsored event.

WIN Consortium

- Formed in 2010 with leadership from Institut Gustave Roussy and MD Anderson
- Non-profit, non-governmental organization headquartered in Paris, France
- **WIN Mission:** Achieve the rapid translation of personalized cancer medicine discoveries into standards for clinical care
- **WIN Vision:** The promise that personalized and effective cancer medicine will be delivered to cancer patients worldwide
- **WIN Values:** Innovation, Collaboration, Communication to significantly improve the outcomes and quality of life of cancer patients

Why WIN?

Global scope of clinical research

- Cancer centers in 16 countries and 4 continents
- Enables identification of differences in patients' response to treatment due to ethnicity or environment

Engagement of all stakeholders: 39 Members

- Academic Cancer Centers (24)
- Industry (8)
 - Pharma
 - Technology companies
 - Small and Medium Enterprises
- Health payors (1)
- Cancer charities / Patient advocacy / Cooperative groups / Not-for-profits

Focus on Clinical Innovation, Efficacy, and Implementation

- WIN studies aim to shift the paradigm of cancer care for patients
- Focus on innovation using biomarkers and targeted therapies in WIN clinical trials
- WIN Symposium brings together all stakeholders in personalized cancer medicine to exchange ideas, promote collaboration and eliminate barriers.

Industry Partners

TECHNOLOGY PARTNERS



Agilent Technologies



FOUNDATION
MEDICINE



GE Healthcare

ORACLE®

HEALTH SCIENCES

PHARMACEUTICAL COMPANIES



SMALL AND MEDIUM ENTERPRISES



Non-Profit and Healthpayer Organizations

NON-PROFIT ORGANIZATIONS



HEALTHPAYERS



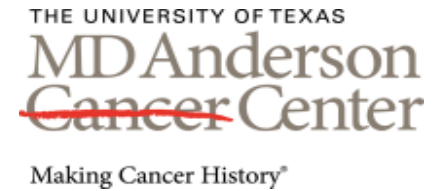
An association of independent Blue Cross and Blue Shield companies

Academic Institutions: Americas and Asia

ACADEMIC INSTITUTIONS IN AMERICAS



Memorial Sloan Kettering
Cancer Center



Segal Cancer Centre
at the Jewish General Hospital

UC San Diego
MOORES CANCER CENTER

ACADEMIC INSTITUTIONS IN ASIA



ASAN
Medical Center



復旦大學



National Cancer
Centre Singapore
SingHealth



Academic Institutions: Europe and Middle East

ACADEMIC INSTITUTIONS IN EUROPE



ACADEMIC INSTITUTIONS IN THE MIDDLE EAST





WINning Together

Accomplish together what one cannot achieve alone:

Significantly improve cancer patients' survival and quality of life by:

- Launching breakthrough clinical trials based on structural and functional genomics
- Accelerating biomarker discovery
- Sharing information to promote use of personalized, targeted cancer therapy

WIN Strategic Plan/Goals: Boston 2013

1. Significantly improve cancer patients' survival and quality of life
 - Innovative therapeutic trials of new therapies in combinations, in diverse patient populations
 - Move towards earlier stage disease
 - Study and compare: responders and non responders, exceptional responders
 - Leverage outstanding academic and pharma researchers
2. Accelerate development of technologies and tools that support biomarker-based targeted therapy for cancer
 - Test new markers, technologies and tools in the clinic
 - Identify markers in the circulation
 - Create decision-support tools for physicians and their patients

WIN Strategic Goals: Boston 2013 (Continued)

3. Promote investigation and clinical use of personalized, targeted cancer therapy through exchange of information and education
 - Tools for sharing standardized data sets broadly
 - Disseminate information to professionals, the public, government agencies, payors
4. Ensure value for all WIN members and achieve sustainability
 - Increased member participation and leadership roles in clinical trials, meetings, communications
 - Expand membership in all categories of stakeholders
 - Alliances with businesses and cancer research organizations

WIN Consortium Leadership Bodies

Executive Committee

- The officers of the WIN Consortium

Directorate

- WIN's 18 directors represent WIN's academic, industry, and non-profit sectors

General Assembly

- The WIN General Assembly is comprised of two representatives from each WIN member organization

Scientific Advisory Board

- WIN's SAB, chaired by Richard L. Schilsky, is comprised of scientific leaders both internal and external to WIN

WIN Executive Committee



John Mendelsohn

Chairman



Alexander Eggermont

*Vice Chair & Chair of
2014 Symposium
Committee*



Richard L. Schilsky

*Chair, Scientific Advisory
Board*



Razelle Kurzrock

*Head of Clinical Trials
Committee*



Vladimir Lazar

Chief Operating Officer



Catherine Bresson

*Director, Operational
Team*

WIN Consortium Directorate

ACADEMIC INSTITUTION REPRESENTATIVES

Europe

Josep Tabernero – Vall d'Hebron (VHIO)
Marco Pierotti – Istituto Nazionale dei Tumori
Kenneth Seamon - Cambridge Cancer Center

Americas

Gerald Batist – Segal Cancer Center McGill
Oliver Bogler – MD Anderson Cancer Center
Andre Lopes Carvalho - Hospital Cancer de Barretos

Asia

Ding-wei Ye – Fudan University Shanghai Cancer Center
Soonmyung Paik – Yonsei Medical Centre
Chang Sik Yu - Asan Medical Center & Asan Institute for Life Sciences

Middle East

Amir Onn – Chaim Sheba Cancer Center
Angel Porgador (deputy Eitan Rubin) – Ben Gurion University of the Negev

NON-PROFIT ORGANIZATION REPRESENTATIVES

Jacques Raynaud – Fondation ARC
Ian Walker – Cancer Research UK

INDUSTRY REPRESENTATIVES

Antoine Yver – AstraZeneca
Jean-François Martini – Pfizer
Manfred Lehnert – Millennium Takeda
Gary Palmer – Foundation Medicine
Frédéric Laget – Agilent Technologies

WIN Scientific Advisory Board

Chairman: Richard L. Schilsky

Vice-chairman: Yudi Pawitan

INTERNAL MEMBERS

Jack Lee, MD Anderson

Gidi Rechavi, Chiam Sheba

Soonmyung Paik, Yonsei

Stephen Laderman, Agilent Technologies

Jin LI, Fudan University Shanghai

Stanley Hamilton, MD Anderson

Sabine Tejpar, EORTC

EXTERNAL MEMBERS

Yosef Yarden, Weizmann Institute

Yudi Pawitan, Karolinska Institute

Leroy Hood, Institute of Systems Biology

Phillip Febbo, Genomic Health

Gary Rosner, Sidney Kimmel Cancer
Center at Johns Hopkins

Yves Lussier, University of Arizona

John Quackenbush, Dana-Farber

Manfred Schmitt, Universitae Munchen

Lillian Siu, Princess Margaret Hospital

Pasi Jane, Dana-Farber

WIN Clinical Trials and Scientific Projects

WIN Consortium assets for conducting studies:

- Legal entity
- Safe legal framework defining main lines of project management (IP, etc.)
- Each individual project has its own specific contract and funding mechanism
- Diversity of stakeholders:
 - *Leading cancer centers worldwide, technology companies, pharma, healthpayers, research organizations, advocacy*
- Diversity of populations
 - *Americas, Asia, Europe, the Middle East*

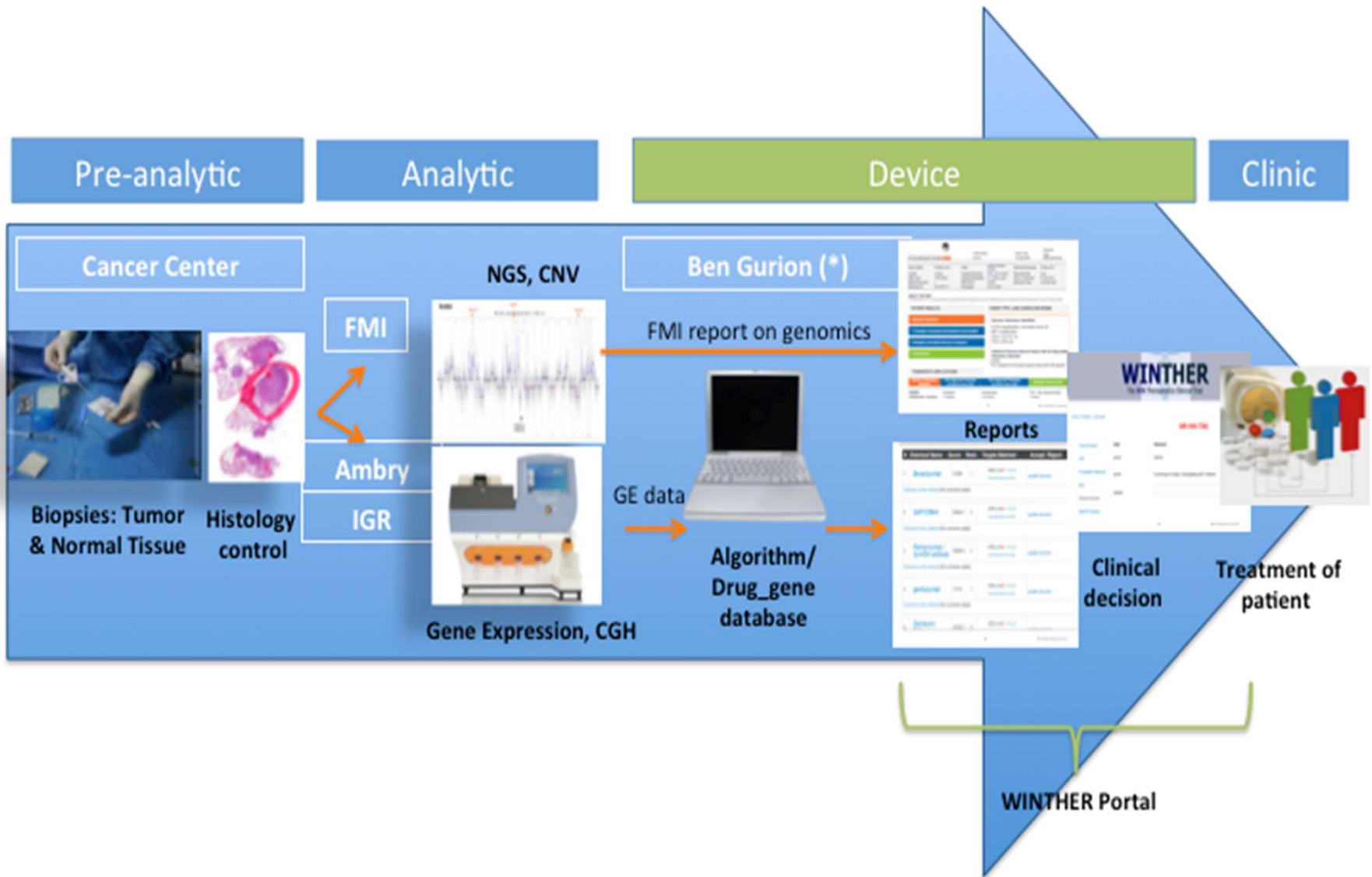
WINTHER (WINtherapeutics) - Ongoing

- Aim is to provide treatment guided by each patient's biology for all patients with a solid tumor, rather than only the minority who have currently actionable biomarkers
- WINTHER is the first trial that uses a dual biopsy of tumor and matched normal for transcriptomic analysis
- Participation of six cancer centers in four countries, and two technology companies
- Financial backing from EU grant, ARC Foundation and pharma Pfizer, Lilly, Novartis

WINTHER Financial Supporters



WINTHER Workflow



WINTHER Participants

CANCER CENTERS

Institut Gustave Roussy [France]
Jean-Charles Soria, Coordinating PI



MD Anderson Cancer Center [USA]
Lia Tsimberidou, PI



VHIO [Spain]
Jordi Rodon, PI



Chaim Sheba Medical Center [Israel]
Rannan Berger, PI



McGill Segal Cancer Center [Canada]
Wilson Miller, PI



UCSD Moores Cancer Center [USA]
Razelle Kurzrock, PI



TECHNOLOGY PARTNERS

Foundation Medicine
Gary Palmer
NGS



Agilent Technologies
Gene Expression,
miRNA



Ben Gurion University
Eitan Rubin
WINTHER Data Analysis



Ariana Pharmaceuticals
Industry tool



WIN 2013 Call for Projects

3 studies were approved by the SAB:

- Identification of miRNA blood circulating biomarkers for early diagnosis and prognosis purposes
 - *Dr. George Calin, MD Anderson Cancer Center*
- Homologous recombination repair deficiency in colon carcinoma
 - *Dr. Hubert Kaduri, Hadassah Jerusalem*
- Personalizing anti-angiogenic treatment in advanced urothelial cancer
 - *Dr. Andrea Necchi, INT Milan*

Combination trial

Impacting survival in Non Small Cell Lung Cancer Targeted therapies combination project

- AstraZeneca MedImmune, Takeda and Pfizer are actively working together on supporting the foundational steps for conducting a 3-drug combination trial in WIN's most experienced cancer centers.
- The project has passed the first stage for a 7 m Euros EU Horizon 2020 grant application with highest score.

BOOSTER - Biomarkers in Oncology for Overall Survival and Therapeutic Efficacy Repository

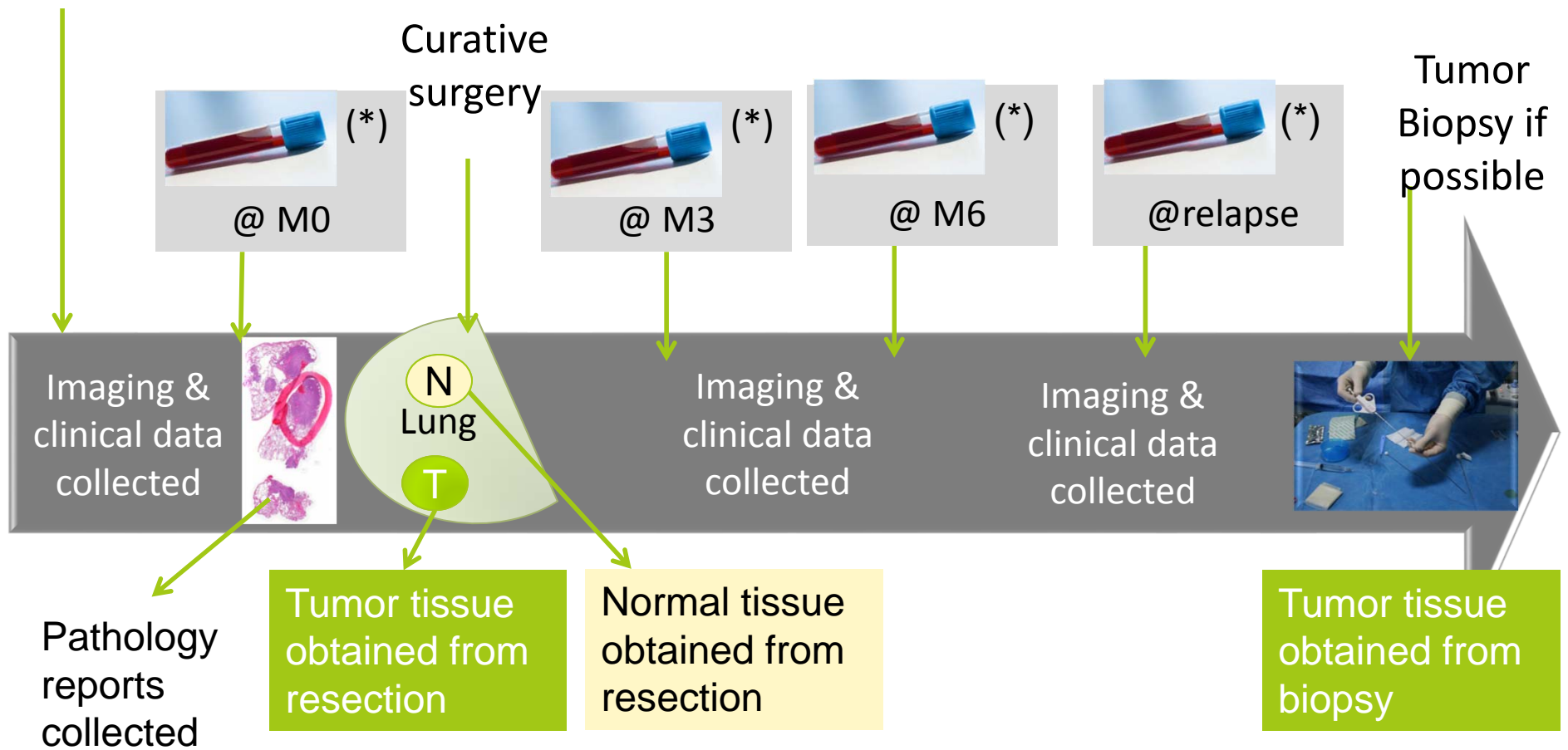
Early diagnosis remains an unmet need
No blood biomarker for disease follow-up

International Repository project for biomarker discovery and validation in early stage lung cancer

- An initiative of the WIN Executive Committee, inspired by R. L. Schilsky
- Will involve all WIN members
- Will enable research projects for biomarker identification and validation, proposed by WIN members
- Can expand to other types of cancer

Inclusion
NSCLC stage I & II

Biological samples and data collection



(*) could include urine & saliva/sputum samples

Bloods & urine & saliva investigations

Investigations



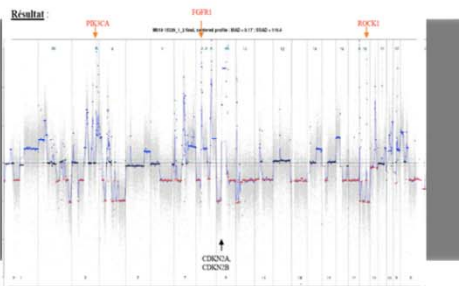
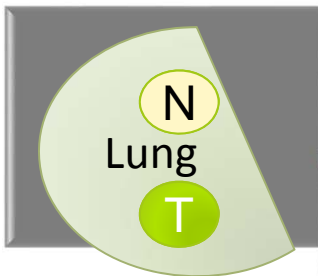
CANDIDATES BIOMARKERS:

Proteins : ELISA, Mass spectrometry, Haptamers

Nucleic acids: PCR, sequencing

Tumoral circulating cells/DNA: cell sorting, IHC, FISH, PCR

Tumor and Normal Tissue investigations



Measure genetic distance between tumor and normal

MOLECULAR SCREENING

NGS-CNV-CGH-gene expression

Integrative systems biology for correlations



Next call for research proposals for SAB Review

Guidelines

- Innovative studies, testing new hypotheses and technologies
 - Multi-institutional/collaborative
-

Areas of focus

- Multiple therapies in combinations
- Discovery and validation of genetic and molecular biomarkers, including blood tests and imaging



Worldwide Innovative Networking in
personalized **cancer** medicine

SAVE THE DATE

WIN Endorsed Workshop: Prospects for Immune Modulation in Precision Cancer Medicine, Jerusalem, February 16-18, 2015

WIN General Assembly, Paris, June 28, 2015

WIN Symposium #7, Paris, June 29-30, 2015

Thank You

Gold Sponsor



Educational Grants Provided By:



Silver Sponsors



Media Partners



Bronze Sponsors

